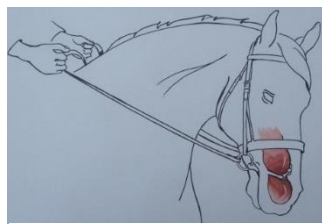


MYLER BITS

Of all the pressure-points a bit can act on, the tongue is the most critical to the horse's way of going:



Typical Angle of Pull, approx.. 30-40° above mouth



The Tongue is pulled back into the bottom jaw. Fixed cheek bits will also rotate downwards slightly due to the angle of pull



The Tongue fills the entire mouth cavity, there is no 'extra' space for the bit



X-Ray shows action of bit on tongue, pulling it away from palate and into bottom jaw

- The tongue is an extremely sensitive and highly specialised group of muscles. It fills the entire mouth cavity.
- Like humans, the horse must move his tongue to swallow. Restricting the tongue restricts this vital reflex, causing stress and tension. This leads to resistance and the horse being distracted. Humans produce an average of 1½ litres of saliva a day; horses produce around 38 litres. Besides eating, Salivation is at its greatest during physical work, which is when we are restricting the tongue with a bit.
- The tongue is directly connected to the horse's sternum and shoulders through the hyoid apparatus, so tension in the tongue has a direct impact on the horse's ability to move freely.
- The tongue is directly connected to the horse's TMJ, a crucial centre for proprioception. Constriction of the tongue therefore effects the horse's coordination, balance, and fluidity of movement.

ALL FORMS OF BIT RESISTANCE ARE DUE TO THE HORSE TRYING TO EVADE TONGUE PRESSURE

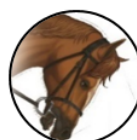
These graphics show what is happening when a horse resists his bit.

Use of a martingale, or a restrictive noseband, eg a Flash or Grackle, does not solve the problem, it merely prevents the horse from moving his tongue away from an uncomfortable bit, causing more tension.



Above the Bit

He is changing the angle of pull, so the pressure is less on his tongue and more into the corners of his lips



Behind the Bit

No rider wants their horse in this position, so they give with their hands, and the horse has reduced the pressure on his tongue



Overactive mouth; Crossed Jaw; Tongue Over Bit or Outside Mouth

The horse is moving the tongue away from the pressure, so that more pressure goes onto his bars



Leaning or Running Through the Bit

The horse has reduced the pressure on his tongue by changing the angle of pull, causing the bit to pull into the corners of his lips



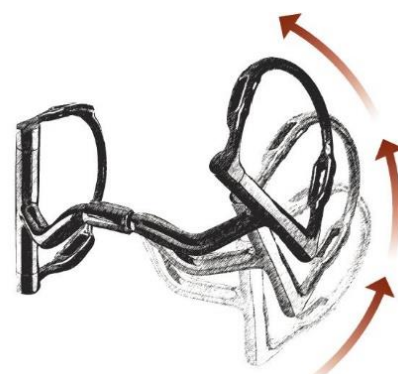
Pulling the Tongue Back into the Throat

To release the pressure on his tongue, the horse pulls it up inside his mouth towards the top of his throat. This pushes the epiglottis back, reducing airflow to the lungs

Your horse would rather you pulled onto his lips or bars, or even interfere with his breathing, rather than restrict his tongue and his ability to swallow.

Myler Bits offer some other key and unique benefits:

- **Independent Side Movement.** The bushing system within the centre barrel allows each side of the bit to move independently, allowing the rider to give much more precise lateral aids.
- **No Nutcracker Action.** The centre barrel restricts the degree of collapse so there is no nutcracker action on the outer lips and bars
- **No Pinching.** The barrel also protects the tongue from getting pinched in the joint.



The tongue is the gateway to the neck, shoulders, and front of the horse

A TENSE HORSE CANNOT MOVE FREELY OR CONCENTRATE ON WHAT HIS RIDER IS ASKING HIM

Myler Ported Snaffles

The more comfortable we can make his mouth and tongue, the more relaxed and receptive the horse will become and the more freely he will be able to move.

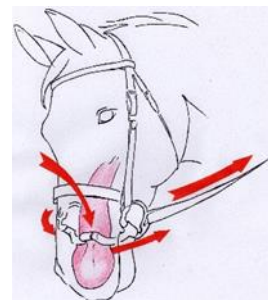


Port with no contact

How do Ports Help?

Now Myler Ported Snaffles are permitted by the FEI and British Dressage, we can give our horses more tongue space, allowing swallowing and freer and more coordinated movement.

All bits touch the palate because the tongue fills the entire mouth cavity. With a ported bit, the tongue fills the port, so there is still only the same single thickness of metal between the tongue and the palate.



activated port rotates to give tongue relief

- The tongue remains an important point of contact to allow the rider to control the horse, so the amount of tongue room we can give depends very largely on the horse's temperament.
- The mouthpiece of a bit is the most important thing for the horse. The cheek has more to do with rider preference or discipline. The cheek does affect the action of the bit a little, but the mouthpiece should be chosen first.

DRESSAGE-LEGAL PORTED SNAFFLES

04 Myler Low Port Comfort Snaffle



A bit for a young-minded horse who takes longer to bring back & refocus after a spook.

The port gives some tongue room, but will rotate onto the tongue if the rider needs a stronger signal. When activated, the 04 will first collapse to wrap the outer lips & bars, giving the horse some warning before it acts on top of the tongue.

06 Myler Low Port Mullen Barrel



A non-collapsing bit for a young-minded horse who takes longer to bring back and refocus after a spook.

The port gives some tongue room, but will rotate onto the tongue if the rider needs a stronger signal. As the 06 does not collapse, the port does not reduce in width, but it rotates onto the tongue slightly quicker than the 04.

36 Myler Forward Tilt Ported Barrel



Medium tongue room for a horse that is trying to be polite, but may still occasionally spook badly and need some tongue pressure to bring it back.

The forward-tilt of the port on this non-collapsing bit gives tongue room even when the horse is off contact.

33 Myler Ported Barrel



A bit for a really nice-minded horse that does not need tongue pressure to control or refocus.

The port allows complete freedom for the tongue, acting primarily on the top of the lips and bars.

The temperament is the most important issue when deciding how much tongue relief we can give the horse.

However, other issues are also relevant when selecting a bit for a horse, including:

- The condition of his teeth: ***regular care from a good equine dentist is crucial.***
- The horse's age and breeding.
- What discipline is the rider doing; are they working with a trainer; and how often do they ride the horse?
- The experience of the horse and of the rider.
- The biting history (esp. mouthpieces) of the horse: - which bits gave the best result and which bits the worst.

UK MYLER BIT CATALOGUE by MOUTHPIECE

MB04: MYLER LOW PORT COMFORT SNAFFLE *(supersedes the MB02 Comfort Snaffle)*

- Small, $\frac{3}{4}$ " port for tongue relief. Wrapping action (no pinch or nutcracker). Independent Side Movement
- Acts on tongue & corners of bars, gently wrapping lips. Encourages horse to bend, balance & relax at the poll
- Ideal for a young horse, encouraging him to move with the bit as it wraps the outer lip



View from the back of the bit (next to the tongue), showing the tongue room given by the port



View from above the bit, showing the forward sweep of the mouthpiece for tongue room

Dressage Legal Cheeks & Sizes

Loose Ring, 2804:	5"; 5½"; 6",	RRP £79
Eggbutt, 2904:	5"; 5½",	RRP £94
Hanging Cheek, 4104:	4½"; 5"; 5½"; 6",	RRP £94



Other Cheeks & Sizes

Full Cheek with hook, 2404:	5"; 5½",	RRP £77	while stocks last
Kimblewick, 25045:	5",	RRP £112	
Pelham, 2604:	4½"; 5"; 5½",	RRP £129	
Eggbutt with hooks, 3004:	5"; 5½"; 6",	RRP £104	
Myler Combination, 3104:	4½"; 5"; 5½"; 6",	RRP £154	

MB06 MYLER LOW PORT MULLEN BARREL *(supersedes the MB32 Mullen Barrel)*

- Non-collapsing version of MB04, with $\frac{3}{4}$ " port and Independent Side Movement
- With no wrapping action, the bit gives more feel directly onto the lips and bars and the signal is a little quicker
- Suited to horses who react better to a solid-action, non-collapsing bit



View from the back of the bit (next to the tongue), showing the tongue room given by the port



View from above, showing the forward sweep of the mouthpiece for tongue room

Dressage Legal Cheeks & Sizes

Eggbutt, 2906:	5"; 5½",	RRP £94
Hanging Cheek, 4106:	4½"; 5"; 5½"; 6",	RRP £98



Other Cheeks & Sizes

Pelham, 2606:	4½"; 5"; 5½",	RRP £122
Eggbutt with hooks, 3006:	5"; 5½",	RRP £107
Myler Combination, 3106:	5",	RRP £120 while stocks last

MB36 MYLER FORWARD-TILT PORTED BARREL

- Forward-tilted version of MB06. $\frac{3}{4}$ " port angled forward 45°. Independent Side Movement
- Acts on the lips and bars; and on tongue with a strong rein
- Suitable for a horse wanting to be polite but who can still spook or need refocussing. The 36 gives tongue relief when off or on very light contact, but does act on tongue with stronger contact
- Can also be ideal for horses with limited room for port (often Mountain & Moorland; Arabs; Hacks)



View from the back of the bit (next to the tongue), showing the tongue room given by the port



View from above the bit, showing the forward-angled port for tongue room with light or no contact

Dressage Legal Cheeks & Sizes

Loose Ring, 2836:	5"; 5½"; 6",	RRP £84
Hanging Cheek, 4136:	5"; 5½",	RRP £96



Other Cheeks & Sizes

Eggbutt with hooks, 3036:	5"; 5½",	RRP £109
Myler Combination, 3136	5"; 5½",	RRP £154

MB33 MYLER PORTED BARREL

- Large 1½" port, no collapse. Independent Side Movement
- Direct action bit, (no collapse). Full tongue relief, acts on top of bars
- Suitable for really well-mannered, finished horse, working well off all aids



View from the back of the bit (next to the tongue) showing the total tongue relief given by the port



View from above the bit, showing the forward sweep of the mouthpiece for tongue room

Dressage Legal Cheeks & Sizes

Loose Ring, 2833:	5"; 5½",	RRP £48
Eggbutt, 2933:	5"; 5½"	RRP £114
Hanging Cheek, 4133:	4½"; 5"; 5½",	RRP £96



Other Cheeks & Sizes

Pelham, 2633:	5"; 5½",	RRP £134
Eggbutt with hooks, 3033:	5"; 5½",	RRP £107
Myler Combination, 3133:	5"; 5½",	RRP £154

MB02 MYLER COMFORT SNAFFLE (wide barrel) (largely superseded by MB04 Low Port Comfort Snaffle)

- Myler Comfort version of French Link. Independent Side Movement but no Port
- Acts on tongue & corners of bars, gently wrapping lips. No pinch or nutcracker
- Suited to a young horse; learning to bend and balance



View from the back of the bit (next to the tongue)



View from above the bit, showing the forward sweep of the mouthpiece for tongue room

Dressage Legal Cheeks & Sizes

Loose Ring, 2802:	5"; 5½",	RRP £79	
Hanging Cheek, 4102:	5"; 5½",	RRP £98	
Hanging Cheek, 42023, 41028:	4½"; 6",	RRP £76	while stocks last



Other Cheeks & Sizes

Full Cheek with 1 hook, 2402:	5"; 5½",	RRP £76	while stocks last
Myler Combination, 33023:	4½",	RRP £112	while stocks last

MB32 MYLER MULLEN BARREL

(largely superseded by MB06 Low Port Mullen Barrel)

- Generously forward-curved Mullen Mouthpiece. No Port. No Collapse. Independent Side Movement
- Spreads pressure across tongue. With no wrapping action, the bit gives more feel directly onto the lips and bars.
- Suited to horses who react better to a solid-action, non-collapsing bit



View from the back of the bit (next to the tongue)



View from above the bit, showing the forward sweep of the mouthpiece for tongue room

Dressage Legal Cheeks & Sizes

Full Cheek, 2332:	5"; 5½",	RRP £77	while stocks last
Hanging Cheek, 4132:	4½"; 5"; 5½"; 6",	RRP £77	while stocks last

Other Cheeks & Sizes

Eggbutt with hooks, 30325	5"	RRP £76	while stocks last
---------------------------	----	---------	-------------------



MB10 MYLER FRENCH LINK

(superseded by MB02 or MB04)

- Generously forward-curved for tongue room. Large link rings to minimise catching
- Acts across tongue, can pinch tongue, lips and bars
- Sweet Iron mouthpiece which will corrode naturally for pleasant taste to encourage acceptance
- Suitable for young horse in early stage of training



View from the back of the bit (next to the tongue)



View from above the bit, showing the forward sweep of the mouthpiece for tongue room

Dressage Legal Cheeks & Sizes

Hanging Cheek, 4110:	5"; 5½",	RRP £60	while stocks last
----------------------	----------	---------	-------------------



OTHER MYLER MOUTHPIECES

MB03 COMFORT SNAFFLE with COPPER ROLLER

- Design and Action as MB02, but with copper roller in centre of barrel which helps to calm busy-mouthed horses. Has Independent Side Movement
- Suited to young horse in early stages of training.



Cheeks & Sizes

Full Cheek with hook, 2403: 4½"; 5", RRP £92 *while stocks last*

MB05 MEDIUM WIDE PORT COMFORT SNAFFLE

- As 04, but much larger port. Has Independent Side Movement.
- Acts on corners & tops of bars. Wraps lips. Little or no palate/tongue pressure
- Suited to intermediate horses needing more tongue room, often cob or ID type



Cheeks & Sizes

Eggbutt with hooks, 3005: 5"; 5½", RRP £92 *while stocks last*

MB32-3 TRIPLE BARREL

- Curved, jointed mouthpiece with three barrels in centre and ISM.
- Acts on tongue and corners of bars, collapses slightly on bars and restricts tongue. Turns into solid mouthpiece when asking for a stop. Similar tongue room to MB04
- Can suit horses who get heavy in the hand and don't suit a big port.



Cheeks & Sizes

Myler Combination, 3131: 5"; 5½", RRP £128 *while stocks last*

MB 41PB CORRECTIONAL PORTED BARREL

- Curved mouthpiece with upward and forward bend, two hinges and centre piece with barrel for ISM. No restriction in degree of collapse.
- Offers lots of tongue relief to compliant horse but will put downward pressure on top of bars when activated, followed by downward pressure on tongue and inward collapse on bars.
- Can be good for strong horse with head down low or into chest. Encourages horse up into bridle.



Cheeks & Sizes

Pelham, 2642: 5"; 5½", RRP £139
 Eggbutt with hooks, 3042: 5"; 5½", RRP £111

MB43LP LOW PORTED BARREL NARROW

- Solid curved mouthpiece with 1" port with centre barrel for ISM
- Gives lots of tongue room. Does not collapse but will roll down onto tongue when horse's head is too far forward
- Can be good for strong, keen horse who tends to put his head out in front



Cheeks & Sizes

Pelham, 2643: 5"; 5½", RRP £134
 Eggbutt with hooks, 3043: 5"; 5½", RRP £84
 Short Shank Combination, 3343: 4½" 5"; 5½", RRP £121
 Hanging Cheek, 4243: 4½", RRP £81

MYLER COMBINATION BITS

The Myler Combination Bit is one of the kindest bits available. It spreads the rein pressure exerted by the rider over several different areas.

Initially, it acts on the nose; poll and back of the jaw, with the mouthpiece “floating” on a loose ring. The total pressure applied by the rider is divided and shared evenly over these 3 areas. If the rider increases the pull on the reins, the mouthpiece moves up against a little ‘stop’ on the cheek ring and engages, acting



on the tongue and bars like a “normal” mouthpiece. At this point, the pressure exerted by the rider is spread over 5 areas – nose; poll; jaw: tongue; and bars, each receiving only 1/5 of the total pressure the rider puts into the rein.

As with all bits, the rider must respond to the horse by relaxing the contact when the horse does as he is asked.

With most “normal” bits which act primarily on the tongue, the horse is able to evade this pressure by resisting and changing the angle of pull (see the Information Sheet on *Resistance: What is Happening and Why*).



With a Myler Combination, however, the pressure on the nose, jaw and poll will **increase** if the horse moves up or down away from the vertical. The horse is therefore rewarded for keeping his head where the rider wants it, which helps him stay light and relaxed at the poll.

This reward; the lack of tongue pressure; and the pressure exerted on the horse’s nose, jaw and poll are all extremely effective at getting the horse to relax at the poll; “roll over” from the withers; & move in an uphill, rounded outline.

It is particularly suitable as the first bit for a young horse, which will be used to head-pressure signals from being led in a head collar. It is also a great bit for horses who are very nervous in the mouth; ex-racehorses who have been trained to “run into their mouths” and are reluctant to come into a good outline; and older horses who think they know it all and will benefit from a very different feel in the communication they receive from the rider.

Many professional event riders find the Myler Combination invaluable to get the horse relaxed and going as softly as possible and working well off the other aids, before they replace it with a permitted bit for their dressage test.

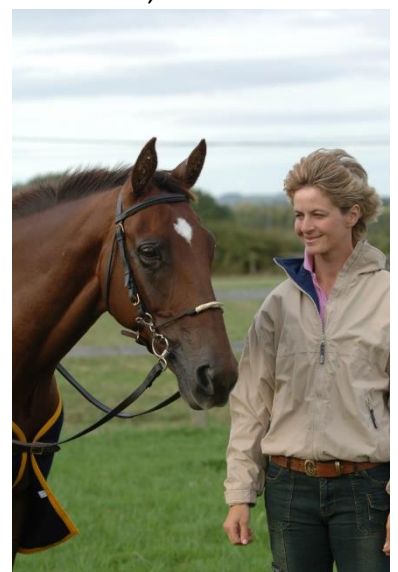
All Myler Combination Bit mouthpieces are made from Sweet Iron which will corrode gradually over time giving a sweet taste that will encourage salivation.

Myler Combination Bits are available in several different mouthpieces, normally with 2 rein options on the shank.

Available in the following mouthpieces

MB02 4½” only	MB04: 4½”; 5”; 5½”; 6”
MB36 5”; 5½”	MB33 5”; 5½”

MB06, 5”, & MB32-3 triple barrel, 5”; 5½” while stocks last



For more details on anything in this brochure; for biting advice; or other information, please contact Shaws Equestrian, Sole UK & Irish Agents for Myler Bits.